

# Report Examples

## Fuel Analysis



**KWAZULU-NATAL**  
P O Box 15108  
Westmead  
3608  
Tel: 031 700 5460  
Fax: 031 700 5471

**GAUTENG**  
P O Box 284  
Isando  
1600  
Tel: 011 392 6322  
Fax: 011 392 6340

### DIESEL

#### Fuel Analysis Report



**PASS**

Customer Name : Mr AB Citizen  
Customer Company

Sampled Date : 13/02/2017  
Received Date : 15/02/2017  
Reported Date : 23/02/2017  
Test Date : 23/02/2017

Company Name : AB Citizen  
Customer Code : FSUNDY  
Equipment Name:  
Chassis/Serial:  
Registration : NP128186  
Eq Make/Model : XYZ  
Cmp Make/Model: Nissan  
Job No :  
Brand/Grade : | Sample Condition: GOOD  
Container : NON WEARCHECK | Sample Volume: 500

#### Diagnosis

1.) s/n:BS63755 on 13/02/2017 SMR:0HRS  
The sample provided conforms with SANS 342:2014 (low sulphur) specifications with respect to the tests carried out.



Technical Signatory:Loshini Govender

#### Tests

Sample Number: BS63755

#### LOW SULPHUR SANS 342:2014 SPECIFICATIONS

	RESULTS	UNITS	LIMITS	COMMENTS
Density@20°C (ASTM D7042)*	0.827	Kg/L	0.800 min	PASS
Viscosity@40°C (ASTM D7042)*	2.8	cSt	2.2-5.3	PASS
Flashpoint (ASTM D93)*	69	°C	55 min	PASS
Water Content (ASTM D6304)	0.005	%	0.035 max	PASS
90% Recovery Temp (ASTM D86)*	347	°C	362 max	PASS
Total Contamination (IP440/SANS 52662)*	6.1	mg/Kg	24 max	PASS
Sulphur (ASTM D4294)*	<5	ppm	50 max	PASS
Sulphur	<0.0005	%		
Residue (ASTM D86)*	1.3	%		
Cetane Index (ASTM D976)*	54.8			

\* Not An Accredited SANAS Method

#### Visual Inspections / Additional Tests

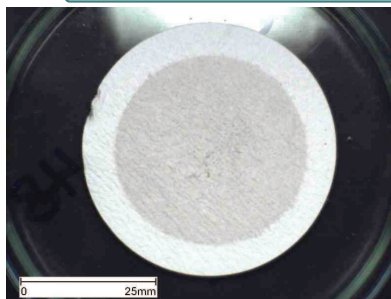
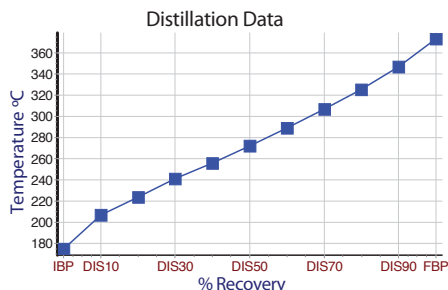
#### Particle Count

	UNIT	RESULTS	COMMENTS
Free Water		None Observed	PASS
Colour		Pale Straw Yellow	
Appearance		Clear	
Bacteria Content		Not Requested	
Total Acid Number	mgKOH/g	Not Requested	
IP Contamination		Not Requested	
Biodiesel	%	Not Requested	

Iron :	Silicon :
Aluminium:	Manganese:
Magnesium:	Sodium :
Zinc :	Vanadium :
Lead :	

#### Distillation And Graph

IBP	175
10	207
20	224
30	241
40	256
50	272
60	289
70	307
80	325
90	347
FBP	373
Rec %	98.7



Issued subject to Standard Conditions (available on request). NOTE: The results relate only to the sample tested - the opinions and interpretation expressed are outside the scope of the accreditation. Uncertainty of the methods are available on request. Where a test method is quoted, it is taken to mean that the test carried out is closely based on, but may not conform exactly to, the quoted method. The test report shall not be reproduced except in full, without written approval of the laboratory.

WEARCHECK IS AN ISO 9001:2008 / ISO 14001:2004 / ISO 17025:2005 REGISTERED COMPANY

SABS | ISO 9001 | ISO 14001 | SANS 17025  
Quality Form ds75 | Revision Date: March 2017

