



A part of Torre Analytical Services (Pty) Ltd  
Reg. No. 1989/000201/07 | VAT No. 4520131816

**KZN Head Office**  
9 Le Mans Place, Westmead, KZN, 3610  
PO Box 15108, Westmead, KZN, 3608  
South Africa  
t +27 (0) 31 700 5460  
f +27 (0) 31 700 5471  
e support@wearcheck.co.za

**Gauteng Office**  
30 Electron Avenue, Isando,  
Gauteng, 1600  
t +27 (0) 11 392 6322

**South African Branches**

Cape Town	+27 (0) 21 001 2100
East London	+27 (0) 82 290 6684
Middelburg	+27 (0) 13 246 2966
Northern Cape	+27 (0) 82 937 2521
Port Elizabeth	+27 (0) 41 360 1535
Rustenburg	+27 (0) 14 596 5706
Steelpoort	+27 (0) 71 269 1332
Bloemfontein	+27 (0) 82 903 3089
Transformer Lab	+27 (0) 31 266 8682

**International Branches**

DRC	+243 (0) 811 809 801
Ghana	+54 (0) 431 6512
India	+ 91 (0) 44 4557 5039
Mozambique	+258 (0) 846 977 006
Namibia	+264 (0) 64 221 551
UAE	+971 (0) 55 221 6671
Zambia	+260 (0) 977 622 287
Zimbabwe	+263 (0) 242 446 369

Revision:Aug2018

## SCOPE OF THE QEMS

1. **WEARCHECK**, a division of Torre Analytical, provides a condition monitoring service by analysing relevant fluids and filters and as such, an entity that can be held legally responsible in terms of the requirements of ISO 17025:2005. In meeting customer and environmental expectations, we will maintain a documented Quality and Environmental Management System that meets the requirements of ISO 9001:2015, ISO14001:2015 and ISO 17025:2005.

The Scope for the ISO 9001:2015 certification covers the design, development and provision of condition monitoring by analysing relevant fluids, filters and plant performance management through integrated technologies.

The Scope for the ISO 14001:2015 certification covers the design, development and provision of condition monitoring analytical services.

2.Scope includes the following:

Site	Physical Address	ISO9001	ISO14001	ISO 17025
Pinetown	9 Le Mans Place , Westmead	X	X	
Johannesburg	30 Electron avenue Isando	X		
WSL	30 Electron avenue Isando	X		X
Middelburg	Unit 7A, Nungu Industrial Park, 13 Mandela Drive, Middelburg	X		

3.Exclusions: None

4.Stake holders : Refer Stakeholder register (w230)

5.Context : Refer SWOT analysis (w229)

6.Outsourced Processes: Refer procedure 08p63



SABS ISO 9001 | ISO 14001 | SANS 17025

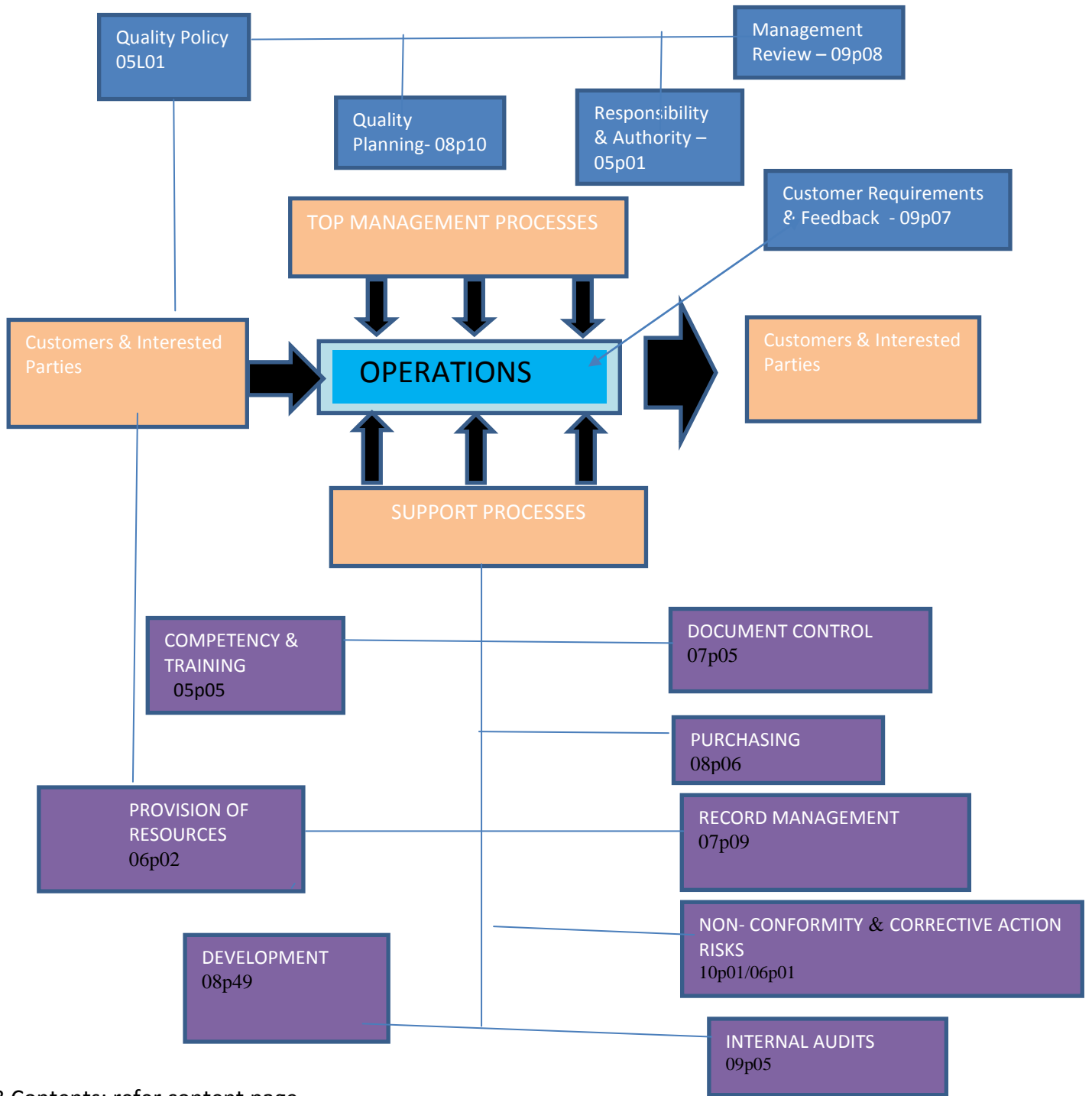
Directors: Neil Robinson, Raksha Naidoo, Michelle Padayachee, Jon Hillary | Company Secretary: Yvette Dembskey | Form w208 | Revision date Aug 2018



**Condition Monitoring Specialists**

www.wearcheck.co.za

7. Sequence & Interaction:



8.Contents: refer content page



SABS ISO 9001 | ISO 14001 | SANS 17025

Directors: Neil Robinson, Raksha Naidoo, Michelle Padayachee, Jon Hillary | Company Secretary: Yvette Dembskey | Form w208 | Revision date Aug 2018



**Condition Monitoring Specialists**

www.wearcheck.co.za